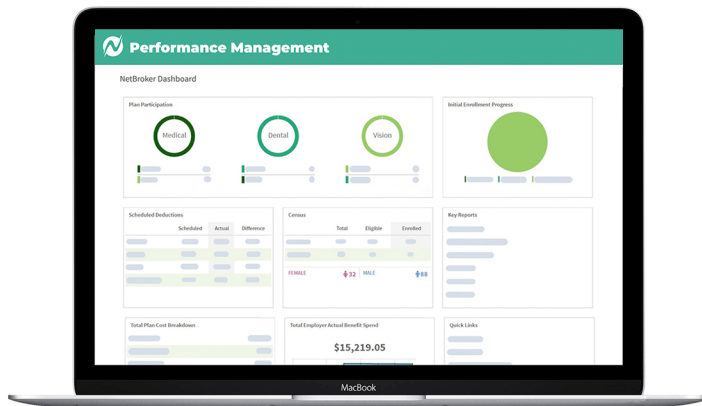
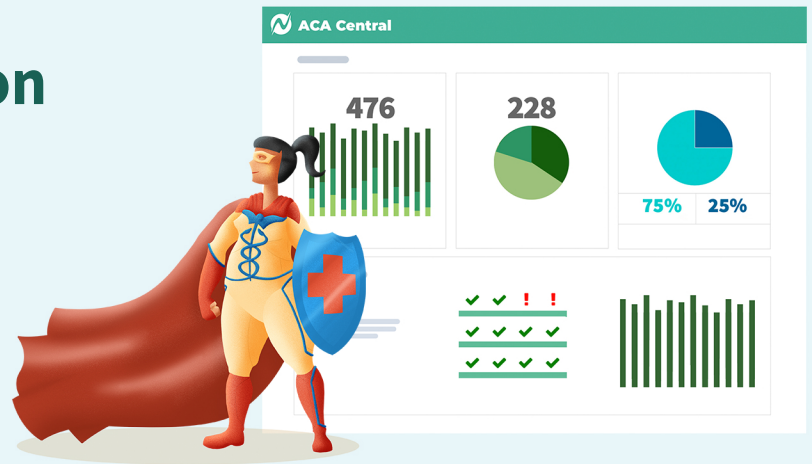


Benefits Administration

Comprehensive doesn't have to mean complex. Netchex offers Benefits Administration solutions that are straightforward and worry-free. Get detailed insights into your benefits plan and enable your employees to take control of the plan that is best for them.



Empower Your Employees

Do your part to help create healthier, happier employees by simplifying the benefits experience with NetBenefits. Through a people-centric portal, our comprehensive solution gives employees command of their benefits experience, including health insurance, vision, dental, 401(k), and life insurance.

Future of Employee Benefits Enrollment

Offload the task of open enrollment and educating new hires about benefits. With NetEnroll, every employee receives education on your company's complete benefits offering and a customized enrollment experience from a team of licensed Benefits Counselors. Eliminate the manual tasks associated with Carrier Communication for companies of all sizes with DFI, our automated and paperless carrier feed process.

COBRA Administration

Make sure employees won't have to worry about loss of benefits when they are in between jobs. Outsource COBRA Administration with NetCOBRA, an affordable solution fully integrated with the Netchex system, including compliance reporting, payment transparency, and HIPAA Certificates.

Real-Time Data and Reporting

Pull enrollment statistics, renewal data, plan costs, usage metrics, ACA compliance, and more from the dashboard overview to help make insightful decisions about your benefits offering. Communicate more effectively with your benefits broker by sharing all the information they need to better serve you.